

TOSHIBA

TOSHIBA POS Terminal

TEC OPOS Control

Printer OPOS Setup Guide

FIRST Edition: Mar 29, 2012

TOSHIBA TEC CORPORATION

Revision Record

Rev. No.	Date	Description
V001.000	29 Mar 2012	First Release

Table of Contents

1. Overview	4
1.1 Objectives	4
1.2 TEC OPOS Control Components	4
1.3 Supported Operating System	4
2. Installation	5
2.1 Starting the installer	5
2.2 Installation Path selection	6
2.3 Installation environment selection	7
2.4 Control selection	8
2.5 Installation section	9
2.6 Finishing Installation	9
3. Default configured value for the OPOS Control	10
4. Uninstallation	10
4.1 Starting the uninstallation	10
5. Restrictions	11

Caution

- It is prohibited to copy or transfer a part or whole of this manual without the consent.
- The content of this manual is subject to change without notice in the future.

*Microsoft, Windows, Windows 2000, Windows XP, WEPOS , Windows Vista, Windows 7, POSReady 2009 and POSReady 7 are trademarks of Microsoft Corporation in the U.S. and other countries.

*The official name of Windows is Microsoft Windows Operating System.

*TCxWave A30 is trade mark of Toshiba Global Commerce Solutions, Inc. in the U.S. and other countries.

1. Overview

1.1 Objectives

The objective of this specification is to explain the procedure to install TEC OPOS Control and Service object for Printer.

TEC OPOS Control installs the following controls.

Printer

- TRSTA1U Printer Control
- TRSTA1S Printer Control
- TRSTA1L Printer Control
- TRSTA1P Printer Control
- TRSTC10 Printer Control

Note) If the installer is used on the TCxWave A30, please install the TGCS Control object at first. And, please do not use the TTEC Control.

1.2 TEC OPOS Control Components

These 2 components are required for TEC OPOS Control Kits:

- OPOS Control
- Native Driver

The Device Driver is provided to access the unique hardware for TOSHIBA TEC Terminals. Some Controls require the Device Driver to be installed in advance. And the above two components will be installed automatically when the installer is executed.

1.3 Supported Operating System

Operating System	32-bit	64-bit
Windows XP Pro (SP3)	✓	
Windows 7	✓	✓
POS Ready 2009	✓	
POS Ready 7	✓	✓
WEPOS 1.1	✓	

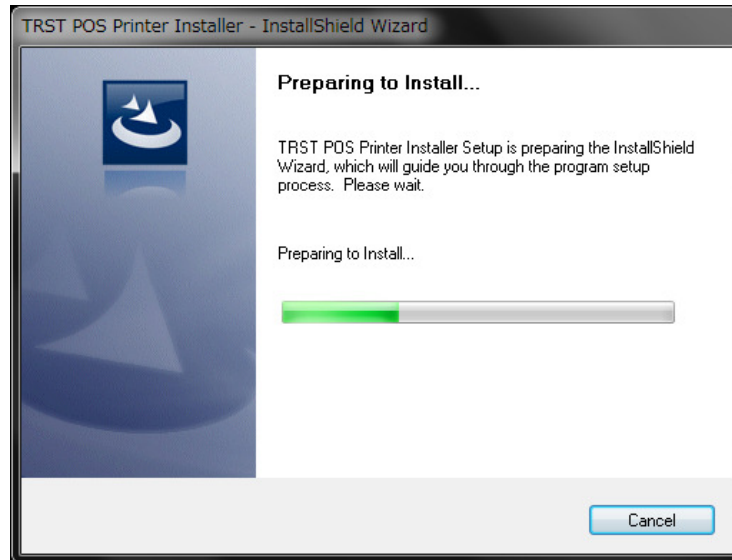
✓ means the OS is supported on the POS models platform

2. Installation

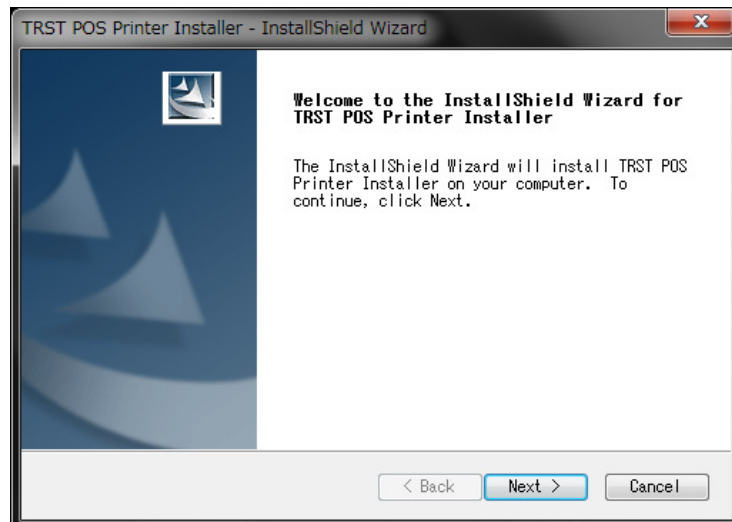
2.1 Starting the installer

Execute “OPOS_TEC_Printer_Installer_x86.exe” file for 32-bit Operating System or “OPOS_TEC_Printer_Installer_x64.exe” file for 64-bit from “OPOS” folder.

1. The description about the installer will be displayed in a few seconds after startup

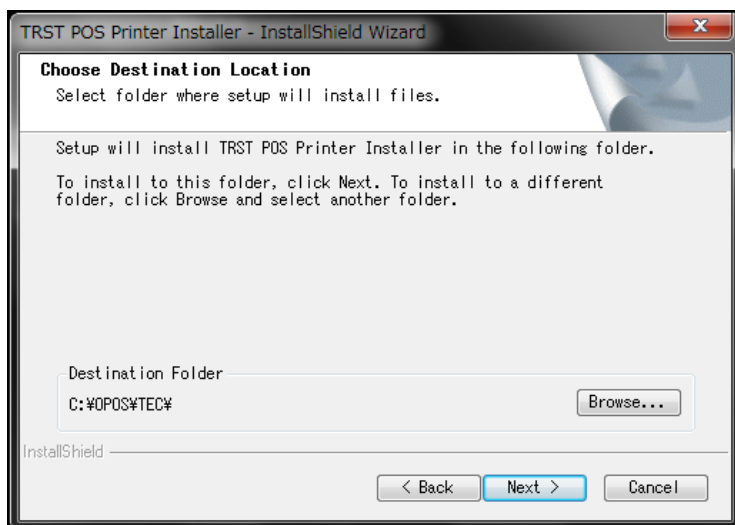


2. Press “Next” button to proceed.



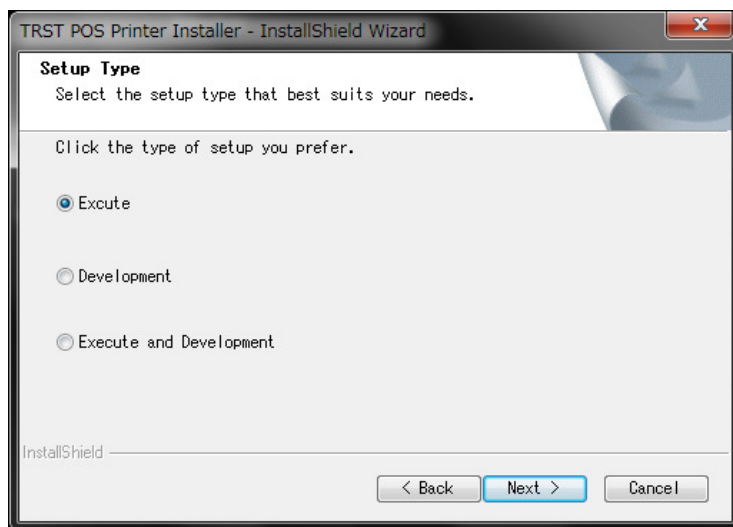
2.2 Installation Path selection

Select the installation location by pressing “Browse” button. Then press “Next” to continue. By default the installation location is C:\OPOS\TEC.



2.3 Installation environment selection

- i) Installation will continue to “Setup Type” screen.
- ii) Select the setup type and press “Next”.



Execute

- Device Control Object
- Service Object
- TEC Control panel
- Test program

Development

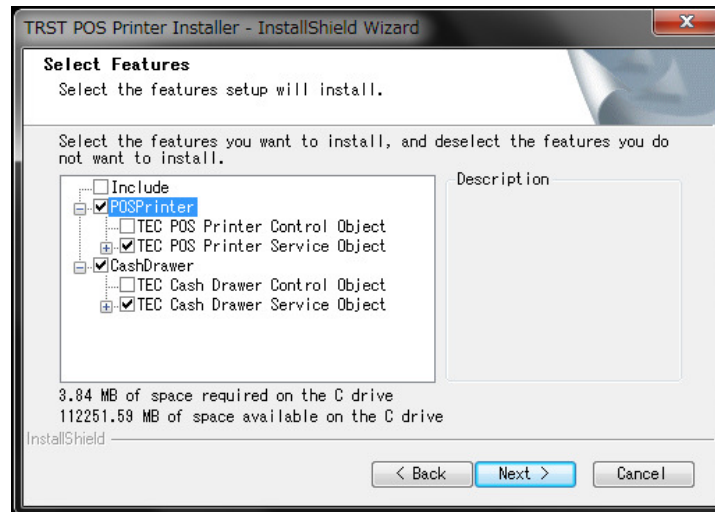
- Device Control Object
- Header file
- TEC Control Panel
- Test program

Development and Execute

- Device Control Object
- Service Object
- TEC Control panel
- Test program
- Header file

2.4 Control selection

In the following screen, select the OPOS Control to be installed. By default, all control is selected. Press “Next” button to start the installation.



Note) If the installer is used on the TCxWave A30, please unselect the following item.

Include

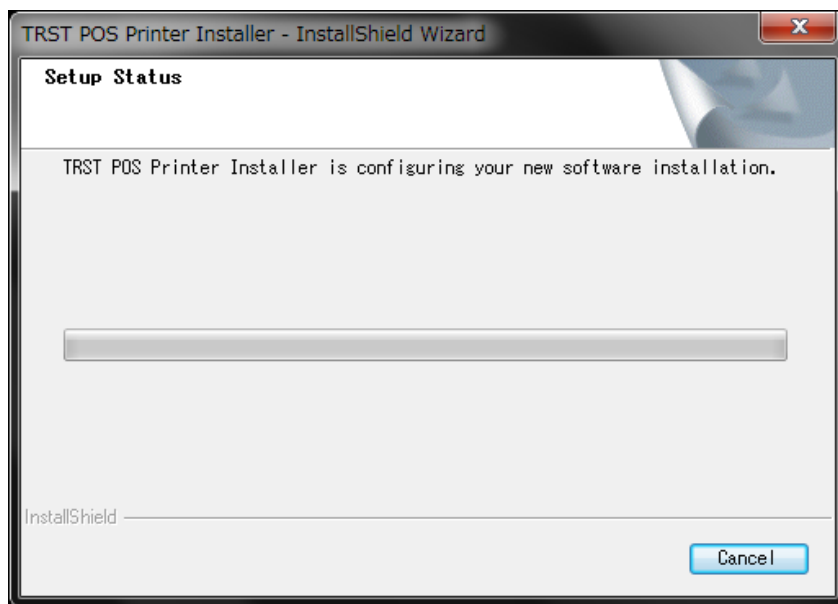
POSPrinter

- TEC POS Printer Control Object ----- Please unselect the item
- TEC POS Printer Service Object ----- Depending on connected device

CashDrawer

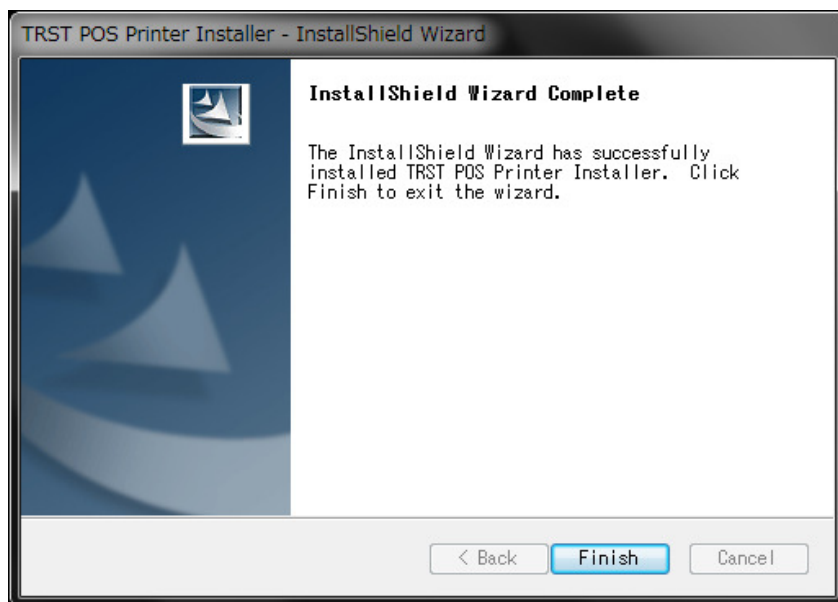
- TEC Cash Drawer Control Object ----- Please unselect the item
- TEC Cash Drawer Service Object ----- Depending on connected device

2.5 Installation section



2.6 Finishing Installation

Click "Finish" button to exit installer.



3. Default configured value for the OPOS Control

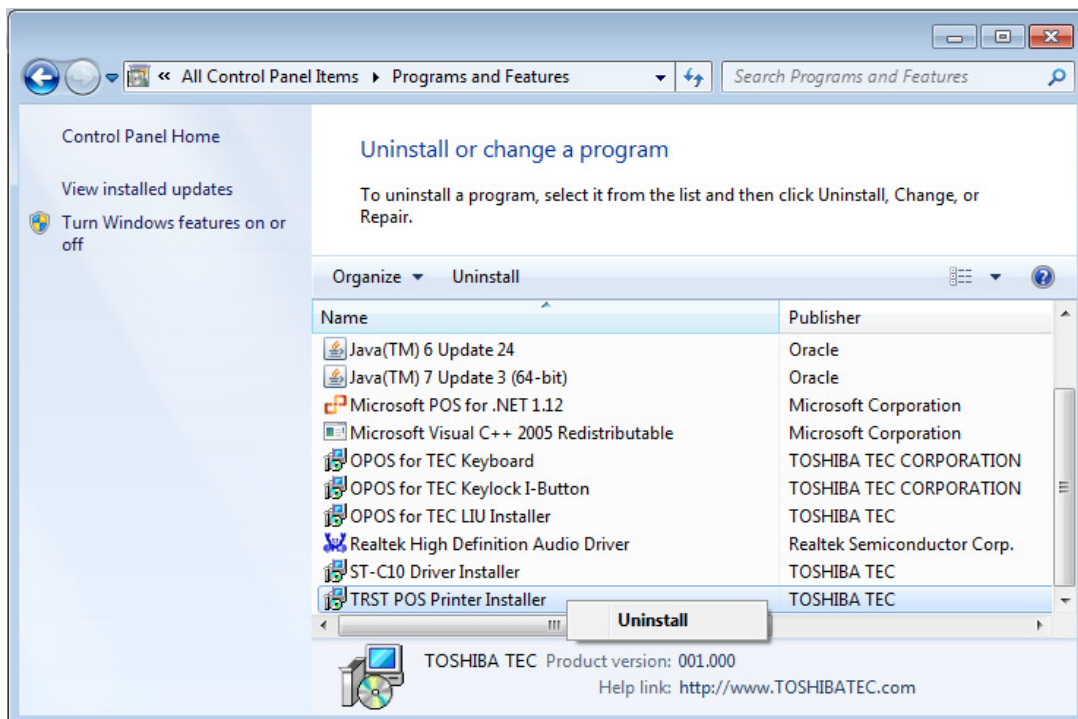
When OPOS Driver and OPOS Control are installed, the default communication port value are:

Device Class	Default Port
TRSTA1U Printer	USB
TRSTA1S Printer	COM1
TRSTA1L Printer	LAN
TRSTA1P Printer	LPT1
TRSTC10S Printer	COM4

4. Uninstallation

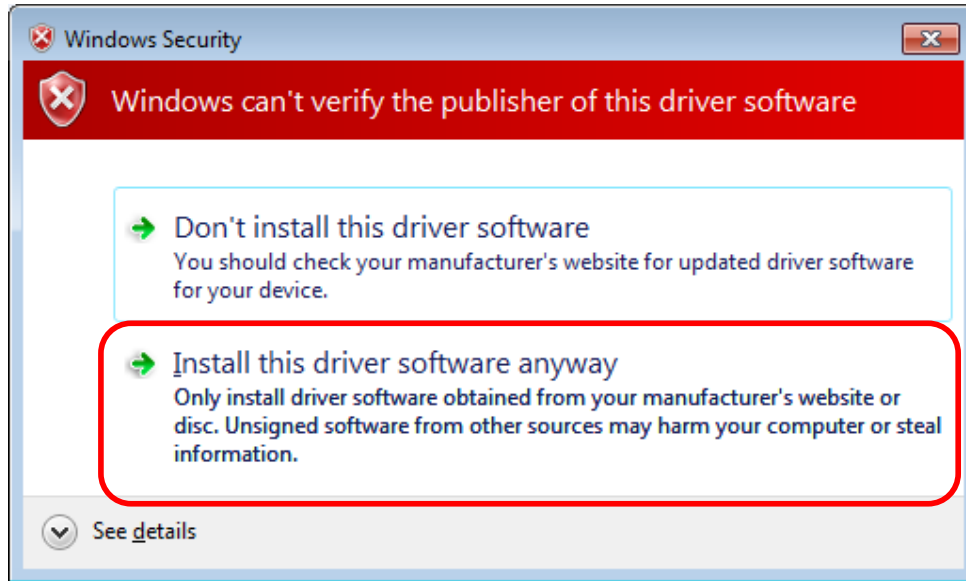
4.1 Starting the uninstallation

1. Open "Control Panel".
2. Open "Programs and Features" or "Add or Remove Programs" from the control panel respectively in Windows 7 and Windows XP.
3. Select "TRST POS Printer Installer", then select "Uninstall" from the right click menu for Windows 7, while Windows XP, press the "Remove" button.



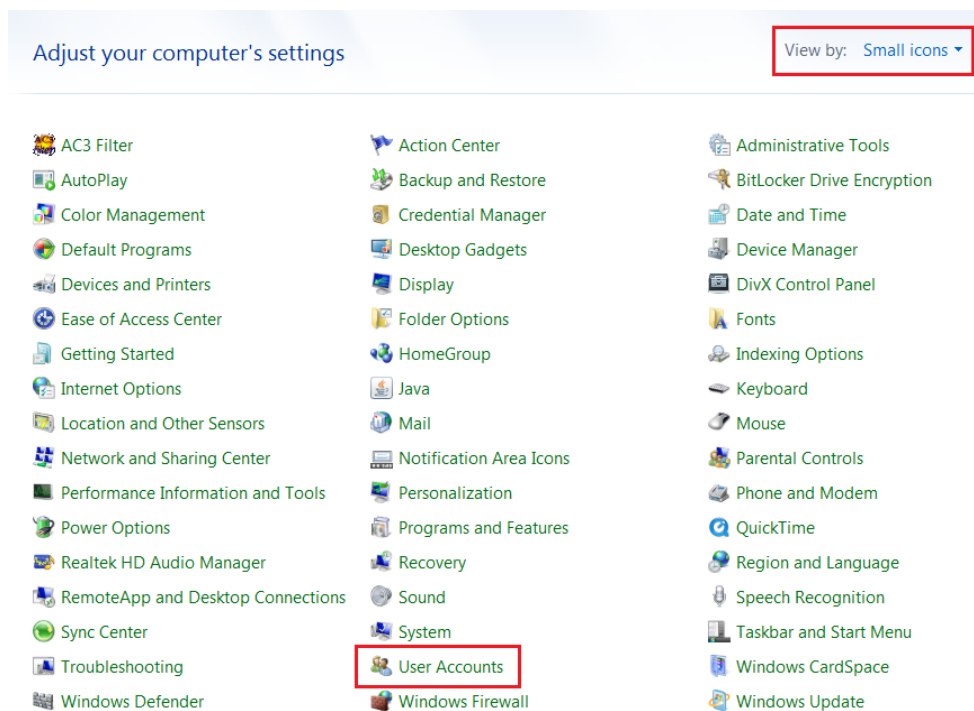
5. Restrictions

NOTE1: On Windows 7 (32-bit) and POSReady7 (32-bit), in order to complete the silent install, user needs to manually accept the Unsigned Driver Installation Dialog Prompt

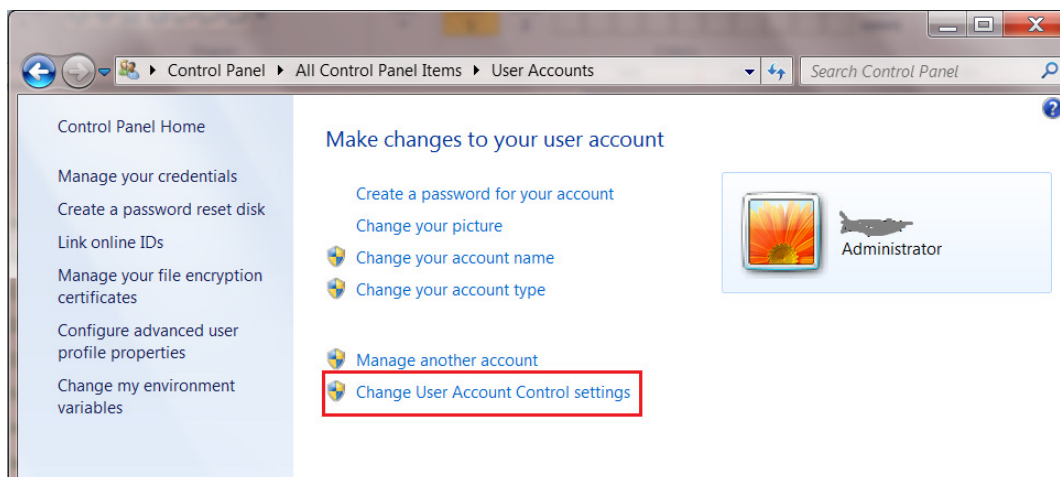


NOTE2: On newer version of windows (windows 7, POSReady 7), it is required to turn off the User Account Control in order to complete the installation.

1. Go to Control Panel, select View by: Small icons to display all features, then click User Accounts.



2. Click Change User Account Control Settings.



3. Move the slider to 'Never notify' position. Click 'OK'. A system reboot is required in order to make the UAC changes taking effect.

